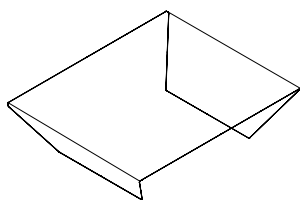


RUBINO

design_Guido Porcellato

CLEAR, EXTRALIGHT, PLATED OR LACQUERED MONO OR TWO-TONES, VARIOUS FINISHES,
BENT GLASS COFFEE TABLE.

DIMENSIONS



 L. 110 P. 70 H. 29

 L. 110 P. 90 H. 29

 L. 110 P. 110 H. 29

MATERIALS & FINISHES

NORMAL GLASS



COD / TR TR
CLEAR

EXTRALIGHT GLASS



COD / TETE
EXTRALIGHT

LACQUERED GLASS CATEGORY A



COD / TRB2
AQUAMARINE



COD / TRC1
MOCHA



COD / TRN1
BLACK



COD / TRN2
ANTHRACITE



COD / TRR1
RED

LACQUERED GLASS TE CATEGORY B



COD / TEA1
IVORY



COD / TEB1
MILKY WHITE



COD / TEC2
CLAY



COD / TER2
ORANGE



COD / TER3
PINK



COD / TEV1
GREEN FLUO

METALLIZED TWO-TONES LACQUERED GLASS CATEGORY C



COD / TRM1
GOLD



COD / TRM2
ALUMINIUM



COD / TRM3
AUBERGINE

METALLIZED TWO-TONES LACQUERED TE GLASS CATEGORY D

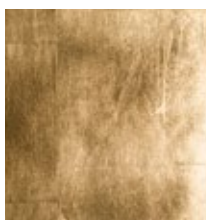


COD / TEM4
EXTRALIGHT GOLD

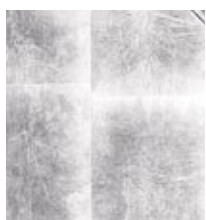


COD / TEM5
EXTRALIGHT ALUMINIUM

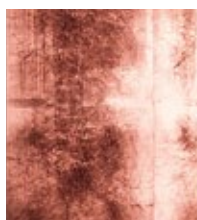
PLATED TE GLASS CATEGORY P



COD / TEYO
GOLD LEAF



COD / TEYA
SILVER LEAF



COD / TEYR
COPPER LEAF