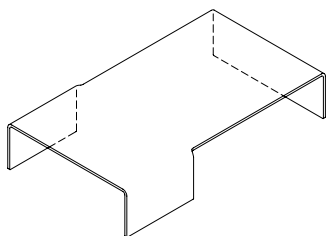





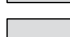
## SPIDER

design\_Lievore Altherr Molina

CLEAR , EXTRALIGHT, PLATED OR LACQUERED, VARIOUS FINISHES, BENT GLASS COFFEE TABLE.

### DIMENSIONS



	L. 100 P. 100 H. 24
	L. 100 P. 100 H. 36
	L. 122 P. 72 H. 24
	L. 122 P. 72 H. 36

### MATERIALS & FINISHES

#### NORMAL GLASS



**COD / TR TR**  
CLEAR

#### EXTRALIGHT GLASS



**COD / TETE**  
EXTRALIGHT

## LACQUERED GLASS CATEGORY A



**COD / TRB2**  
AQUAMARINE



**COD / TRC1**  
MOCHA



**COD / TRN1**  
BLACK



**COD / TRN2**  
ANTHRACITE



**COD / TRR1**  
RED

## LACQUERED GLASS TE CATEGORY B



**COD / TEA1**  
IVORY



**COD / TEB1**  
MILKY WHITE



**COD / TEC2**  
CLAY



**COD / TER2**  
ORANGE



**COD / TER3**  
PINK



**COD / TEV1**  
GREEN FLUO

## METALLIZED TWO-TONES LACQUERED GLASS CATEGORY C



**COD / TRM1**  
GOLD



**COD / TRM2**  
ALUMINIUM



**COD / TRM3**  
AUBERGINE

## METALLIZED TWO-TONES LACQUERED TE GLASS CATEGORY D

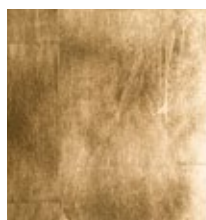


**COD / TEM4**  
EXTRALIGHT GOLD

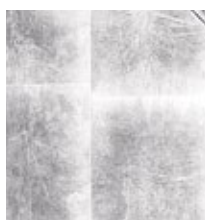


**COD / TEM5**  
EXTRALIGHT ALUMINIUM

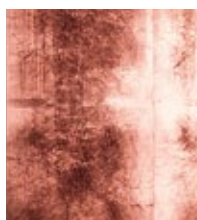
## PLATED TE GLASS CATEGORY P



**COD / TEYO**  
GOLD LEAF



**COD / TEYA**  
SILVER LEAF



**COD / TEYR**  
COPPER LEAF