

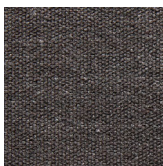
VISION



457



445



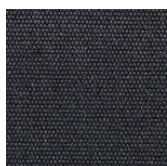
526



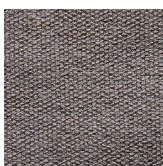
439



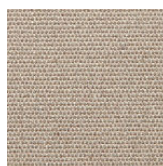
443



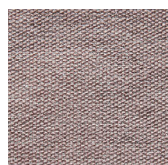
449



399



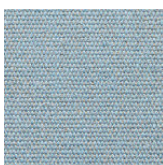
446



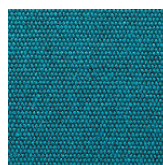
395



452



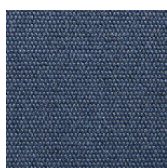
442



455



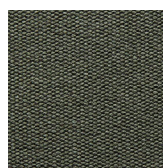
450



441



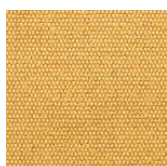
527



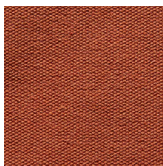
528



396



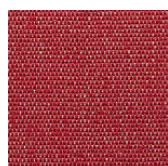
454



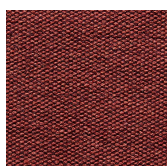
397



448



453



398

VISION

EN

Composition: 85% Cotton, 15% Polyester
Maintenance: Vacuum regularly or professional Dry-clean
Abrasion Resistance: 35.000 Martindale cycles
Flammability: EN 1021 part 1&2

DE

Zusammensetzung: 85% Baumwolle, 15% Polyester
Reinigung: Regelmässig staubsaugen. Professionelle Trockenreinigung
Scheuerfestigkeit: 35.000 Martindale
Feuerschutz: EN 1021 part 1&2

FR

Composition: 85% Coton, 15% Polyester
Nettoyage: Aspirer régulièrement. Nettoyage á sec professionnel
Résistance á l'abrasion: 35.000 cycles Martindale
Normes au feu: EN 1021 part 1&2

DK

Materiale: 85% Bomuld, 15% Polyester
Rengøring: Støvsug regelmæssigt eller professionel rens
Slidstyrke: 35.000 Martindale
Flammesikring: EN 1021 part 1&2