



Armchair / Sofa

Internal metal frame and cold-injection polyurethane foam. Fire retardant foam meets California Bulletin 117A, EN1021-1/2:2014 and Italian Class 1 IM Standards.

Special foam meeting the 5852 British Standards is available on request.

Legs in steel with powder coated or chromed finish.

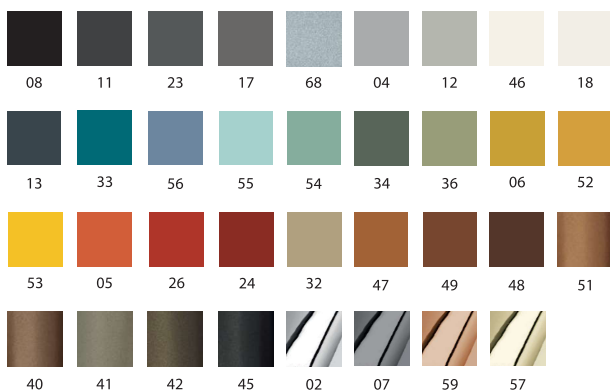
Covers: fabric, faux-leather, leather or C.O. M. (preferably in solid colours) with heavy duty Gros Grain welting.



	Article	Upholstery	Powder coated legs	Chromed legs	Galvanic legs 07, 59 e 57	pcs / dimensions volume / gross weight product net weight
Armchair Metal legs	I200	Gazebo Xtreme Plus / Magnum / Rivet / Main Line Flax Blazer / Gingko / Step Melange / Silvertex / Remix3 Steelcut Trio3 / Atlas / Canvas2 Leather C.O.L. C.O. faux leather / C.O.M. (solid colour)				1 pc / 74x74x57 cm 0,31 m3 / 21 Kg 18,6 Kg
Sofa Metal legs	I201	Gazebo Xtreme Plus / Magnum / Rivet / Main Line Flax Blazer / Gingko / Step Melange / Silvertex / Remix3 Steelcut Trio3 / Atlas / Canvas2 Leather C.O.L. C.O. faux leather / C.O.M. (solid colour)				1 pc / 139x74x57 cm 0,59 m3 / 39 Kg 32,3 Kg

Finishes

Metal legs



Additional costs

Upholstery in two different materials or two colours of the same material

Customer's own material

For customer's own material/leather, the form at the end of the price list shall apply, to be sent to Segis Spa with the Client's signature.

Art. I200 Solid fabric: for 1 pc 290 cm (H.140 cm)

C.O.L. qty: for 1 pc 4,20m2

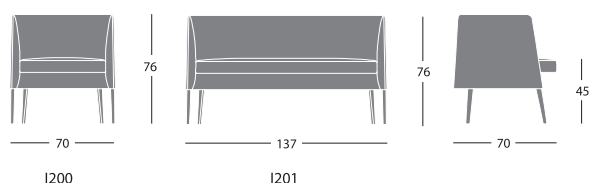
Upholstery in two colours for 1 pc (H.140 cm): seat 80 cm / shell 210 cm

Art. I201 Solid fabric: for 1 pc 410 cm (H.140 cm)

C.O.L. qty: for 1 pc 6,20 m2

Upholstery in two colours for 1 pc (H.140 cm): seat 130 cm / shell 280 cm

Dimensions



Resistance tests

Armchair Agorà (art. I200)

Test ANSI-BIFMA X5.11 -2015/7 - backrest strenght test

Test ANSI-BIFMA X5.11 -2015/11 - seating durability test

Test ANSI-BIFMA X5.11 -2015/12 - stability test

Test ANSI-BIFMA X5.11 -2015/16 - back durability test

Armchair / Sofa

Internal metal frame and cold-injection polyurethane foam.

Fire retardant foam meets California Bulletin 117A, EN1021-1/2:2014 and Italian Class 1 IM Standards.

Special foam meeting the 5852 British Standards is available on request.

Legs in oak.

Covers: fabric, faux-leather, leather or C.O. M. (preferably in solid colours) with heavy duty Gros Grain welting



	Article	Upholstery	Wood legs	pcs / dimensions volume / gross weight product net weight
Armchair Wood legs	I210 *	Gazebo Xtreme Plus / Magnum / Rivet / Main Line Flax Blazer / Gingko / Step Melange / Silvertex / Remix3 Steelcut Trio3 / Atlas / Canvas2 Leather C.O.L. C.O. faux leather / C.O.M. (solid colour)		1 pc / 74x74x56 cm 0,31 m3 / 21 Kg 18,6 Kg
Sofa Wood legs	I211 *	Gazebo Xtreme Plus / Magnum / Rivet / Main Line Flax Blazer / Gingko / Step Melange / Silvertex / Remix3 Steelcut Trio3 / Atlas / Canvas2 Leather C.O.L. C.O. faux leather / C.O.M. (solid colour)		1 pc / 139x74x57 cm 0,59 m3 / 39 Kg 32,3 Kg

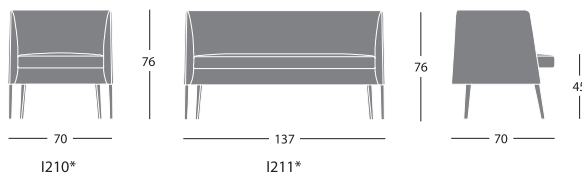
Finishes

Wood legs FSC™ certified



The mark of responsible forestry
FSC® C155379

Dimensions



Gros Grain colours



Additional costs

Upholstery in two different materials or two colours of the same material

Customer's own material

For customer's own material/leather, the form at the end of the price list shall apply, to be sent to Segis Spa with the Client's signature.

Art. I210* Solid fabric: for 1 pc 290 cm (H.140 cm)
C.O.L. qty: for 1 pc 4,20m2

Upholstery in two colours for 1 pc (H.140 cm): seat 80 cm / shell 210 cm

Art. I211* Solid fabric: for 1 pc 410 cm (H.140 cm)
C.O.L. qty: for 1 pc 6,20m2

Upholstery in two colours for 1 pc (H.140 cm): seat 130 cm / shell 280 cm

Round ottomans in two dimensions

Ø 73 or Ø 123 cm, available with six castors or with 6 thermoplastic glides.

Base in black thermoformed plastic material.

Frame in plywood and polyurethane foam with lining of polyester padding.

Fire retardant foam meets California Bulletin 117A, EN1021-1/2:2014 and Italian Class 1 IM Standards.

Special foam meeting the 5852 British Standards is available on request.

Covers: fabric, faux-leather, leather or C.O. M. (preferably in solid colours) with heavy duty Gros Grain welting.



	Article	Upholstery	Glides	Castors	pcs / dimensions volume / gross weight product net weight
Ottoman Ø 73 cm	I204	Gazebo Xtreme Plus / Magnum / Rivet / Main Line Flax Blazer / Gingko / Step Melange / Silvertex / Remix3 Steelcut Trio3 / Atlas / Canvas2 Leather C.O.L. C.O. faux leather / C.O.M. (solid colour)			1 pc / 74x74x48 cm 0,26 m3 / 13,5 Kg 10,5 Kg
Ottoman Ø 123 cm	I205	Gazebo Xtreme Plus / Magnum / Rivet / Main Line Flax Blazer / Gingko / Step Melange / Silvertex / Remix3 Steelcut Trio3 / Atlas / Canvas2 Leather C.O.L. C.O. faux leather / C.O.M. (solid colour)			1 pc / 124x126x48 cm 0,75 m3 / 30 Kg 24 Kg

Glides

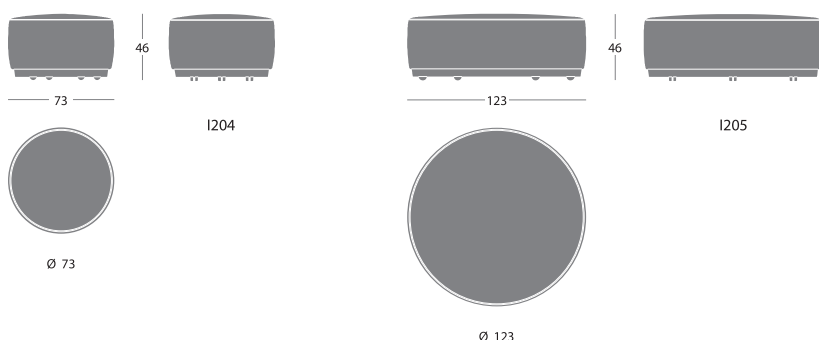
Castors



Gros Grain colours



Dimensions



Customer's own material

For customer's own material/leather, the form at the end of the price list shall apply, to be sent to Segis Spa with the Client's signature.

Art. I204
Solid fabric: for 1 pc 180 cm (H.140 cm)
C.O.L. qty: for 1 pc 2,7 m2

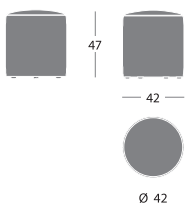
Art. I205
Solid fabric: for 1 pc 320 cm (H.140 cm)
C.O.L. qty: for 1 pc 4,9 m2

Ottoman-stool with castors or glides
 Covers: fabric, faux-leather, leather or
 C.O.M (preferably in solid colours) with
 heavy duty Gros Grain welting.

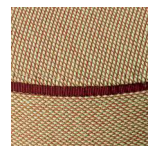


	Article	Upholstery	pcs / dimensions volume / gross weight product net weight
Ottoman Ø 42 cm - H. 47 cm	I213	Gazebo Xtreme Plus / Magnum / Rivet / Main Line Flax Blazer / Gingko / Step Melange / Silvertex / Remix3 Steelcut Trio3 / Atlas / Canvas2 Leather C.O.L. C.O. faux leather / C.O.M. (solid colour)	1 pc / 43,5x43,5x50 cm 0,09 m3 / 6,5 kg 5,6 kg
Ottoman Ø 42 cm - H. 47 cm with castors	I215	Gazebo Xtreme Plus / Magnum / Rivet / Main Line Flax Blazer / Gingko / Step Melange / Silvertex / Remix3 Steelcut Trio3 / Atlas / Canvas2 Leather C.O.L. C.O. faux leather / C.O.M. (solid colour)	1 pc / 43,5x43,5x50 cm 0,09 m3 / 6,2 kg 5,6 kg

Dimensions



I213 / I215



Gros Grain colours



Customer's own material

For customer's own material/leather, the form at the end of the price list shall apply, to be sent to Segis Spa with the Client's signature.

Art. I213 / I215
 Solid fabric: for 1 pc 110cm (H.140 cm)
 C.O.L. qty: for 1 pc 1,6 m2

All prices are net V.A.T.