

# Hallingdal 65

Kvadrat's first textile 'Hallingdal' has become the archetype of woollen textiles. The very durable upholstery fabric was originally designed in 1965 by Nanna Ditzel, and is now available in a version with an updated colour scale: Hallingdal 65.

Hallingdal 65 is made of wool and viscose, which complement each other well: the wool provides excellent durability and flexibility, whilst the viscose adds brilliance and depth to the colour. Both materials are dyed before they are spun, which highlights the rich texture of the fabric.



<b>Category:</b>	Kvadrat upholstery
<b>Pattern:</b>	Solid
<b>Composition:</b>	70% new wool 30% viscose
<b>Width:</b>	Approx. 130 cm (Approx. 51")
<b>Weight:</b>	795 g/lin. m (25.64 oz/ly)
<b>Repeat:</b>	Approx. 0/0 cm (Approx. 0"/0")
<b>Durability:</b>	100,000 Martindale
<b>Pilling:</b>	3-4 (ISO 1-5)
<b>Lightfastness:</b>	7

<b>Fire Tests:</b>	AS/NZS 1530.3 • BS 5852 Crib 5 • BS 5852 part 1 • IMO FTP Code 2010 Part 8 • NF D 60 013 • NFPA 260 • UNI 9175 1IM • US Cal. Bull. 117-2013 • EN 1021-1/2 • ASTM E84 Class A Adhered • SN 198 898 5.3 with treatment • ÖNORM B1/Q1 • GB 50222 B1 with treatment (Chinese) • AS/NZS 3837 class 2 • ASTM E84 Class B Unadhered
<b>Fastness to rubbing:</b>	4-5 (Dry) 3-4 (Wet)
<b>Airflow:</b>	182 Pa s/m
<b>Absorption:</b>	0.45/Class D (Absorption flat) 0.70/Class C (Absorption folded)
<b>Seam Slippage:</b>	4.5 mm (warp), 4 mm (weft)

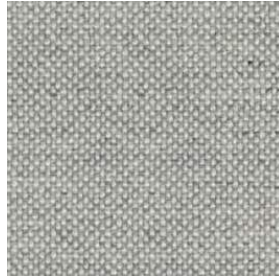
Textiles Hallingdal 65



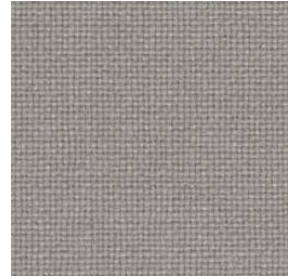
Hallingdal 65  
0100



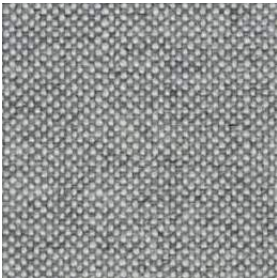
Hallingdal 65  
0103



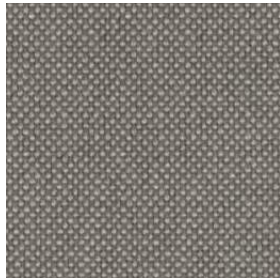
Hallingdal 65  
0110



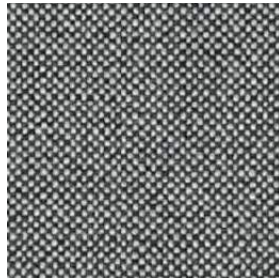
Hallingdal 65  
0113



Hallingdal 65  
0116



Hallingdal 65  
0123



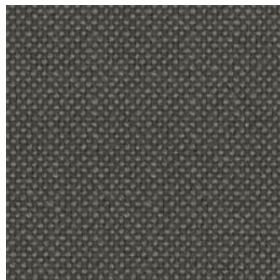
Hallingdal 65  
0126



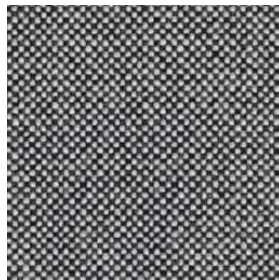
Hallingdal 65  
0130



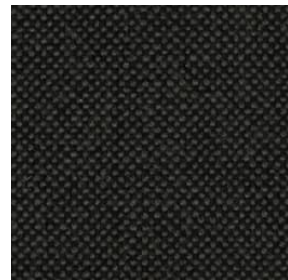
Hallingdal 65  
0143



Hallingdal 65  
0153



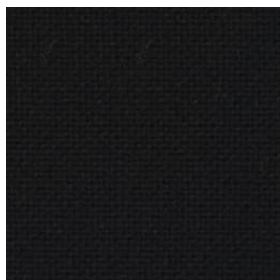
Hallingdal 65  
0166



Hallingdal 65  
0173



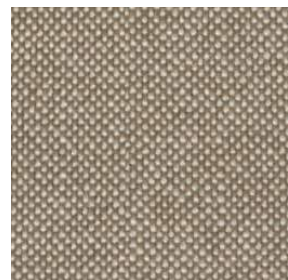
Hallingdal 65  
0180



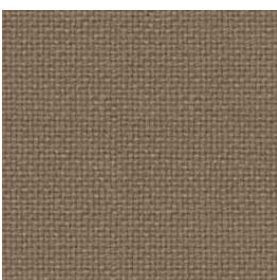
Hallingdal 65  
0190



Hallingdal 65  
0200



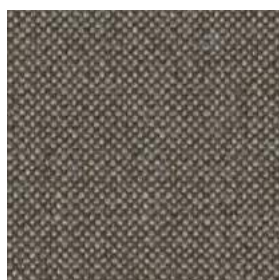
Hallingdal 65  
0220



Hallingdal 65  
0224



Hallingdal 65  
0227

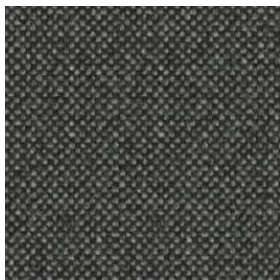


Hallingdal 65  
0270



Hallingdal 65  
0350

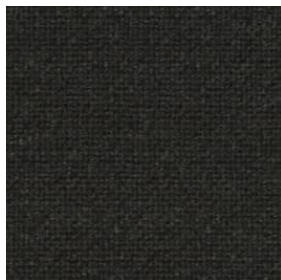
Textiles Hallingdal 65



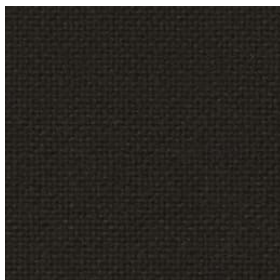
Hallingdal 65  
0368



Hallingdal 65  
0370



Hallingdal 65  
0376



Hallingdal 65  
0390



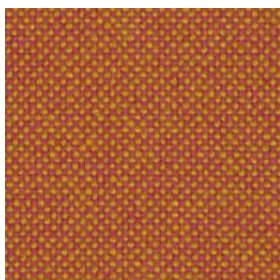
Hallingdal 65  
0407



Hallingdal 65  
0420



Hallingdal 65  
0457



Hallingdal 65  
0526



Hallingdal 65  
0547



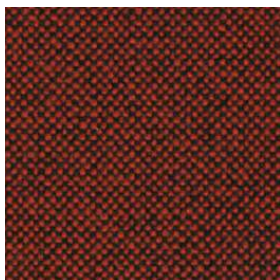
Hallingdal 65  
0563



Hallingdal 65  
0573



Hallingdal 65  
0590



Hallingdal 65  
0596



Hallingdal 65  
0600



Hallingdal 65  
0657



Hallingdal 65  
0660



Hallingdal 65  
0674



Hallingdal 65  
0680



Hallingdal 65  
0687



Hallingdal 65  
0694

Textiles Hallingdal 65



Hallingdal 65  
0702



Hallingdal 65  
0723



Hallingdal 65  
0733



Hallingdal 65  
0750



Hallingdal 65  
0753



Hallingdal 65  
0754



Hallingdal 65  
0763



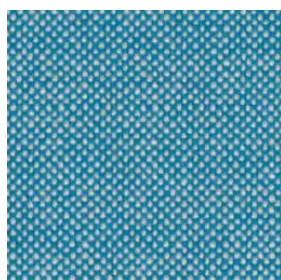
Hallingdal 65  
0764



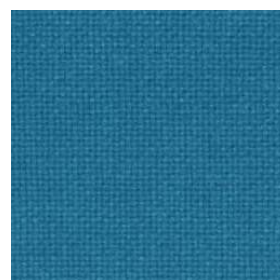
Hallingdal 65  
0773



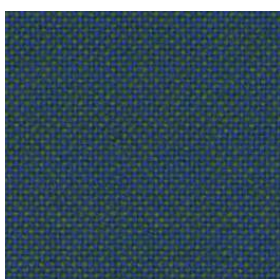
Hallingdal 65  
0810



Hallingdal 65  
0840



Hallingdal 65  
0850



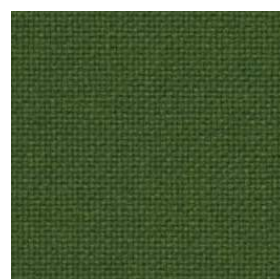
Hallingdal 65  
0890



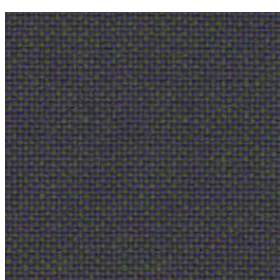
Hallingdal 65  
0907



Hallingdal 65  
0944



Hallingdal 65  
0960



Hallingdal 65  
0968



Hallingdal 65  
0980