

2020



As the name suggests, the Arpa collection is based on the Harp, one of the most beautiful and captivating musical instruments.

Unlike the meticulous work involved in manufacturing a harp, in designing this collection, rigorous paring down was applied, resolving each piece with the least possible number of elements.

Arpa combines the stability of the outer orthogonal structure, with the comfort and softness of the inside cushion. The refined cords add elegance and delicacy to each element in the range, giving a sensation of lightness, as if the entire upholstery was floating, suspended by its structure.

Designed to be timeless, Arpa is meant to become iconic, not only for aesthetic reasons, but also due to functionality and comfort.

#### Upholstered structure:

Backrest and seat loadbearing structure in stainless steel, 2 x 2 cm section, epoxy powder coated using specific treatment for outdoor use in the matt goffered finish, in white, corten, pewter, and black iron colours. The pewter and black iron paint finishes have a cloudy effect, a feature and peculiarity of this particular finish. The seat frame has elastic straps, specifically for outdoor use.

The backrest frame is woven by hand using high tensile polyester cord, in mass pigmented colour, able to guarantee high resistance to weather, abrasion, limited elongation, and colour fastness. The seats are made with original, exclusive weaving.

#### Cushions and Covering

The back and seat cushions are made of Dryfeel (draining polyurethane) of varied densities, wrapped in siliconed hollow fibre bound in polyester, that will not rot, does not cause suffocation, and is antibacterial, while the final cover is in 100% polyester Tecnostrong.

This particular composition of the cushion gives the padding natural softness and elasticity, a long lifespan and great comfort.

The upholstery fabric covers every part of the cushions, and is completely removable.

Extra covers available.

For the fabric characteristics, see the table on page 412.

#### Colour variations:

The Arpa collection is available in a range of four colours:

- Structure goffered matt white painted (X124), cord matt anthracite grey, covers in Ramiro ecru (R550) fabric.
- Structure goffered black iron painted (X130), cord matt anthracite grey, covers in Ramiro titanium (R551) fabric;
- Structure goffered matt pewter painted (X129), cord matt ecru grey, covers in Ramiro pewter (R552) fabric;
- Structure goffered matt corten painted (X128), cord matt ecru grey, covers in Ramiro dark orange (R553) fabric.

#### Side table structure:

Loadbearing structure in stainless steel, 2 x 2 cm section, epoxy powder coated using specific treatment for outdoor use in the matt goffered finish, in white, corten, pewter, and black iron colours.

Top made of fine porcelain stoneware laminate, matt variations in light grey or black calce.

Bush hammered medium grey Pietra di Savoia, and natural satin-finished corten.

#### Side tables:

- Structure goffered matt white painted (X124), light grey calce matt ceramic top;
- Structure goffered matt black iron painted (X130), black calce matt ceramic top;
- Structure goffered matt pewter painted (X129), matt medium grey Pietra di Savoia ceramic top;
- Structure goffered matt corten painted (X128), corten ceramic top (X010).

#### Outdoor use

Any material left outdoor, even if properly treated, due to the action of weathering, can have superficial molecular and colour changes during its lifetime. Of course the amount of alteration is directly related to the amount of exposure to weather and to the geographical area. Regular maintenance, for instance periodic cleaning with water, increases resistance to corrosion.

#### Use and maintenance:

- During winter and when the items are not in use, we recommend covering the structures with the specific optional cover accessories, and to put the cushions indoors in a dry place.
- To avoid mould and foul odours occurring, we recommend not allowing the cushions to hold rain water and, if needed, to air and dry the fabric completely, before once again putting them on the couch structure and using them again.
- We recommend washing the exposed structures with water and mild neutral soap.

**ACCESSORIES**

Protective tarpaulin specifically for outdoor products, waterproof, made of 100% polyester, outside with acrylic coating, inside with acrylic resin coating.

Its characteristics are emphasised by its fully fungicidal Teflon finish.

Each tarpaulin comes with a closable slip cover, so that it can be folded and kept correctly when not in use.

**Use and Maintenance:**

For correct washing, use a delicate neutral soap and water, and rinse thoroughly after washing, using only water.

After cleaning, allow the fabric to dry correctly before folding it and putting it away, to avoid it getting mouldy.

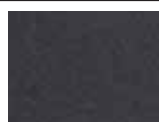
**NB** Avoid the fabric coming into direct contact with weed killers, fertilisers, and chlorine, as these may stain the protective tarpaulin indelibly.

**Strength:**

- Tensile strength: warp: 125 DaN/5 cm - weft: 120 DaN/5 cm
- Tear strength: warp: 2.5 DaN - weft: 2,5 DaN/5 cm
- Light resistance: level 6/8
- Heat resistance: +70°C
- Cold resistance: -30°C
- Column of water: approx 1000 mm

**MATCHING OF THE SOFAS FINISHES****structure**

S085 = goffered matt white painted X124



S088 = goffered black iron painted X130



S087 = goffered matt pewter painted X129



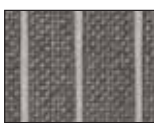
S086 = goffered matt corten painted X128

**cord**

F120 = matt anthracite grey



F120 = matt anthracite grey



F105 = matt ecru grey



F105 = matt ecru grey

**Ramiro fabric**

R550 = ecru



R551 = titanium



R552 = pewter



R553 = dark orange

**MATCHING OF THE SIDE TABLES FINISHES****structure**

S085 = goffered matt white painted X124



S088 = goffered black iron painted X130



S087 = goffered matt pewter painted X129



S086 = goffered matt corten painted X128

**top**

P107 = light grey calce matt ceramic



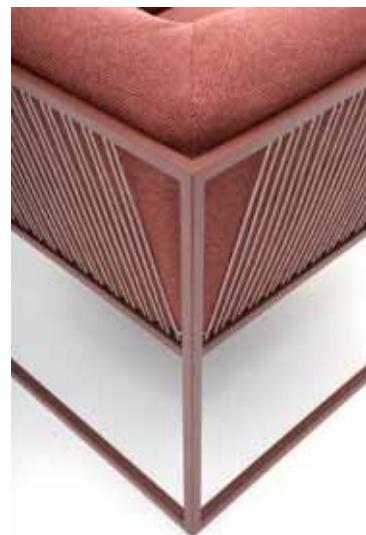
P108 = black calce matt ceramic



P109 = matt medium grey Pietra di Savoia ceramic

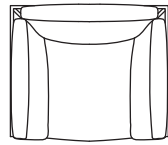
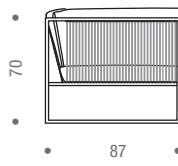
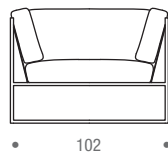


P075 = corten ceramic X010

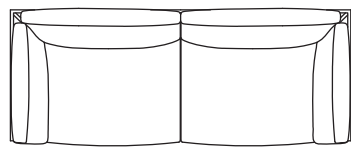
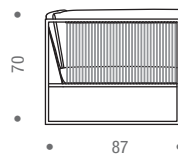
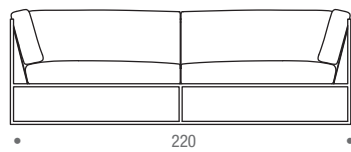


# ARPA

**armchair**



**sofa 3S**



**side table**

