



Frame

A sofa whose peculiar design in the backrest features a seat with a variable depth.

Frame in solid wood, suspension with elastic belts covered with indeformable variable-density polyether.

The sofa rests on two stands in chromium-plated steel, height 16 cm.

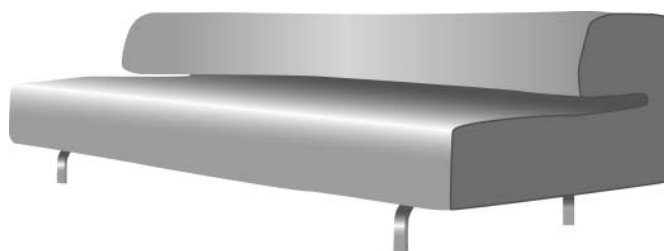
Optional extra covers if required.

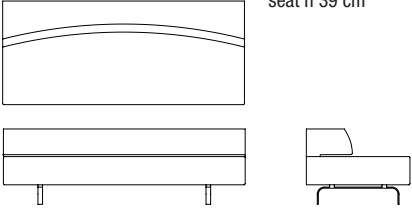
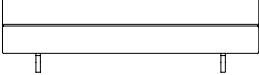

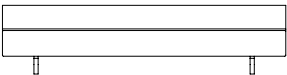
The units in leather have a fixed cover only and, at MDF Italia's discretion, one or more seams according to size.

Cover

The upholstery covers every part of the sofa and is completely removable. The tilting backrest makes cover removing easier.

The underlining in cotton helps remove the upholstery and the sofa still looks good when uncovered.



		dims	fabric length	code	fabric	complete	extra cover
sofa 3S		210x90x h 64 cm seat h 39 cm	6,5 m	0609-01	A/B C C.O.M./D E F G MDF Italia leather		
sofa 3S extra		230x90x h 64 cm seat h 39 cm	7 m	0609-02	A/B C C.O.M./D E F G MDF Italia leather		
sofa 4S		250x90x h 64 cm seat h 39 cm	7,5 m	0609-03	A/B C C.O.M./D E F G MDF Italia leather		
sofa 4S extra		270x90x h 64 cm seat h 39 cm	8 m	0609-04	A/B C C.O.M./D E F G MDF Italia leather		

note

Lengths are intended for solid colour fabrics (width 1.40 m). For striped and fancy fabrics, lengths should be requested.