

KAI | S39

Shin Azumi | 2006



# KAI

Shin Azumi | 2006

In Japanese "KAI" means shell. And just like a shell that opens and reveals its very soft interior, this chair perfectly adapts to the body. Thanks to a fold in the backrest, it provides support and comfort. With its minimalist design, it has a versatile and strong personality.



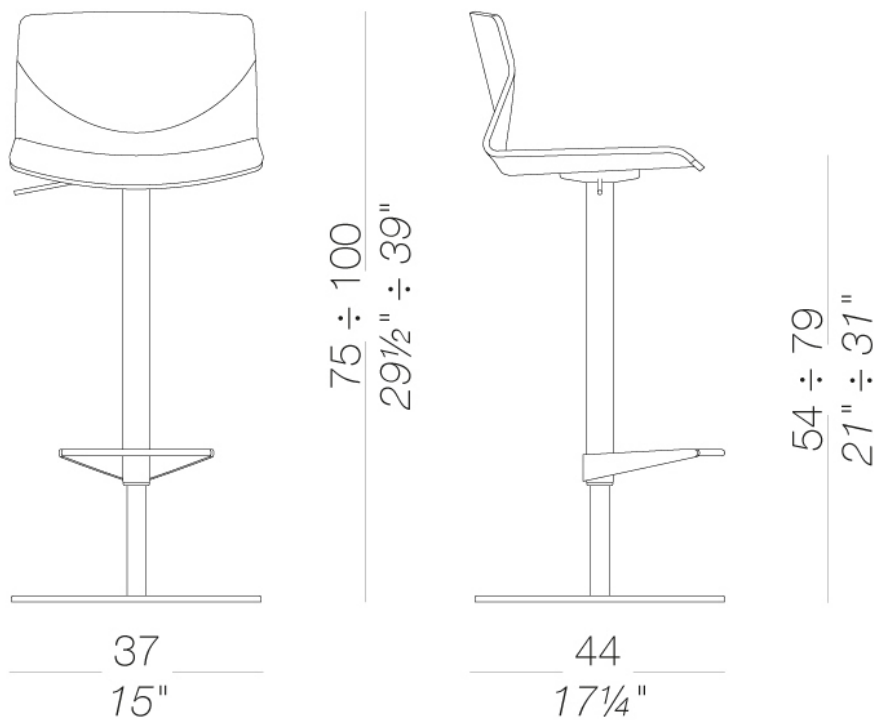
# KAI

Shin Azumi | 2006

## | S39 height-adjustable bar stool H54 ÷ 79

Stool with swivel seat and adjustable height. Frame in sandblasted stainless steel Aisi 304 and round base in steel with « linen fabric » pattern or completely powder coated white or black. Seat in moulded plywood in several finishes, also with seat-pad in soft-leather or fully upholstered in fabric or leather. Felt under the base.

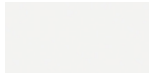
TEST EN 15373:2007 - EN 15373:2007 - L3 severe  
TEST 1 IM - Leather



## frame



powder coating  
black  
1 Colors



powder coating  
white  
1 Colors

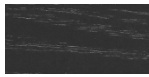


metal  
stainless steel  
1 Colors

## shell



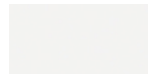
wood  
blanch oak  
1 Colors



wood  
black open pore  
1 Colors

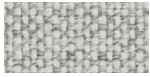


wood  
oak dark walnut  
1 Colors



lacquered  
white lacquered  
1 Colors

## upholstery



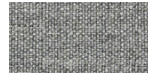
fabric  
Hallingdal 65 -  
Grade C  
58 Colors



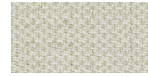
fabric  
Canvas 2 - Grade C  
45 Colors



fabric  
Steelcut Trio 3 -  
Grade D  
54 Colors



fabric  
Remix 3 - Grade C  
72 Colors



fabric  
Clara 2 - Grade C  
24 Colors



fabric  
Fiord 2 - Grade C  
39 Colors



fabric  
Divina MD - Grade D  
27 Colors



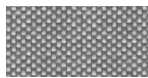
fabric  
Divina Melange 3 -  
Grade D  
38 Colors



fabric  
Tonica 2 - Grade C  
39 Colors



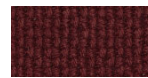
fabric  
Medley - Grade A  
37 Colors



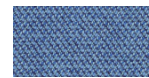
fabric  
Maya - Grade A  
43 Colors



fabric  
Jet - Grade A  
66 Colors



fabric  
Lapalma Smart -  
Grade C  
18 Colors



fabric  
Capture - Grade B  
43 Colors



fabric  
Crisp - Grade B  
40 Colors



fabric  
Nattè - Grade B  
30 Colors



fabric  
Iris - Grade B  
24 Colors



fabric  
Steelcut 3 - Grade D  
40 Colors



leather  
Dleather  
7 Colors

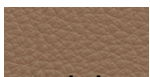


ecoleather  
GRIMM FR - Grade  
A  
32 Colors



ecoleather  
Valencia - Grade B  
66 Colors

## cushion



soft-leather

Soft-leather

## use and maintenance instructions

Clean all parts in wood, leather, fabric and metal with a damp cloth or a diluted neutral cleaner. Do not use cleaners with alcohol, bleach, solvent or abrasive products. Any liquid spilt on the product must be wiped up immediately. When lifting or moving the product, hold it on the structure and not under the seat. The product should not be subjected to unbalanced weights, as it is designed for a proper rest on the foothold (on four legs or on the base). Our company relieves from any responsibility in case of damage caused to fragile floors. Avoid any improper use of the product: do not step on the product, on the footrest or on the armrests. Avoid any movements that could compromise the proper functionality of the product or the safety of the users. Wood and leather, being natural materials, could be easily damaged. Small impurities or imperfections are within quality standard range. Do not expose the product to weather conditions or atmospheric agents, nor to heat sources over 40°C. Also products for outdoor use could be afflicted by atmospheric agents. The product could undergo possible exterior changes due to particular exposure to heat, humidity and saltiness. An appropriate and frequent maintenance and cleaning of the product enhances its durability. The product could change colour and shade, if exposed to direct sunlight. Maintenance has to be carried out by experienced staff. Dispose of the package only after assembling the product, in order to avoid the loss of ironmongery and components. Once the product has been dismantled, the product itself or its components must be given to the public garbage disposal system, according to the legislation in force.