

Thin-K glass

Designer Luciano Bertoncini

Finish of structure:

Anodised aluminium

Leg finish:

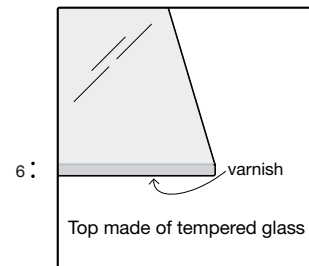
- Aluminium painted steel
- Steel with white lacquer
- Steel with sand grey lacquer
- Steel with anthracite grey lacquer
- Steel with black lacquer

Top finish/external details on leg:

- Gloss glass in standard colours: extra white, anthracite, black, titanium
- Gloss glass in RAL/NCS range colours on request
- Matt glass in colours: extra white, anthracite grey, black, titanium

Finish of extensions:

- Aluminium with white lacquer (painted in polyester powder)
- Aluminium with sand grey lacquer (painted in polyester powder)
- Aluminium with anthracite grey lacquer (painted in polyester powder)
- Aluminium with black lacquer (painted in polyester powder)



! Please note: variations in shade against selected RAL/NCS sample cannot be avoided and are caused by colour refracting through the thickness of the glass.
Glass in RAL/NCS shades has longer lead times: approximately 8 weeks from order date.

Extensible (↔) - Rectangular legs (■)

Code	Length (cm.)	Depth	Finish of legs	Finish of top	Vol.
01THK11R	123-163-203	80	lacquer	gloss in standard	0.23
				gloss in RAL/NCS (!)	
				matt glass	
01THK12R	150-190-230	80	lacquer	gloss in standard	0.28
				gloss in RAL/NCS (!)	
				matt glass	
01THK14R	170-210-250	90	lacquer	gloss in standard	0.35
				gloss in RAL/NCS (!)	
				matt glass	

Nr. packages 1

Extensible (↔) - Square legs (■)

Code	Length (cm.)	Depth	Finish of legs	Finish of top	Vol.
01THK11Q	123-163-203	80	lacquer	gloss in standard	0.23
				gloss in RAL/NCS (!)	
				matt glass	
01THK12Q	150-190-230	80	lacquer	gloss in standard	0.28
				gloss in RAL/NCS (!)	
				matt glass	
01THK14Q	170-210-250	90	lacquer	gloss in standard	0.35
				gloss in RAL/NCS (!)	
				matt glass	

Nr. packages 1

Fixed (||) - Rectangular legs (■)

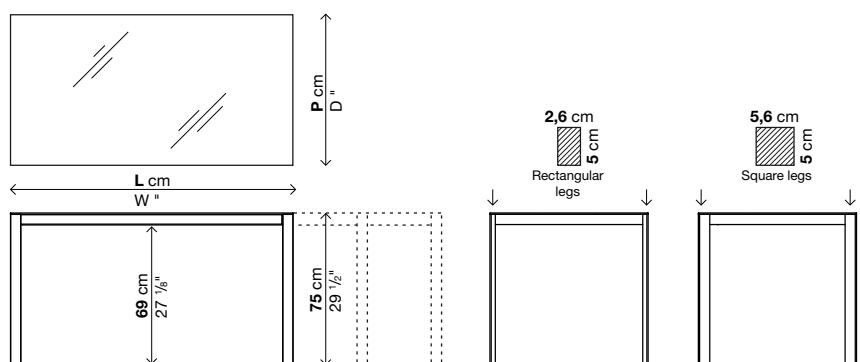
Code	Length (cm.)	Depth	Finish of legs	Finish of top	Vol.
01THK11FR	123	80	lacquer	gloss in standard	0.23
				gloss in RAL/NCS (!)	
				matt glass	
01THK12FR	150	80	lacquer	gloss in standard	0.28
				gloss in RAL/NCS (!)	
				matt glass	
01THK14FR	170	90	lacquer	gloss in standard	0.35
				gloss in RAL/NCS (!)	
				matt glass	

Nr. packages 1

Fixed (||) - Square legs (■)

Code	Length (cm.)	Depth	Finish of legs	Finish of top	Vol.
01THK11FQ	123	80	lacquer	gloss in standard	0.23
				gloss in RAL/NCS (!)	
				matt glass	
01THK12FQ	150	80	lacquer	gloss in standard	0.28
				gloss in RAL/NCS (!)	
				matt glass	
01THK14FQ	170	90	lacquer	gloss in standard	0.35
				gloss in RAL/NCS (!)	
				matt glass	

Nr. packages 1



80 cm
31 1/2"
123/163/203 cm
48 3/8/64 1/8/79"

01THK11 extensible
01THK11F fixed

80 cm
31 1/2"
150/190/230 cm
59/74 7/8/90 1/2"

01THK12 extensible
01THK12F fixed

90 cm
35 1/2"
170/210/250 cm
66 7/8/82 3/4/98 3/8"

01THK14 extensible
01THK14F fixed

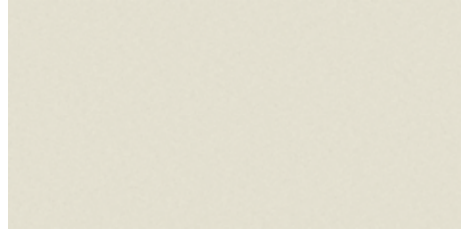
Finishes

Finiture metallo

Metal finish / Metallausführungen / Acabados metal / Finitions métal



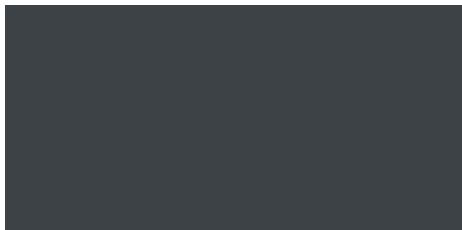
Bianco / White / Weiß / Blanco / Blanc



Grigio sabbia / Sand grey / Sandgrau / Gris arena / Gris sable



Grigio / Grey / Grau / Gris / Gris



Grigio antracite / Anthracite grey / Grau anthrazit / Gris antracita / Gris anthracite



Nero / Black / Schwarz / Negro / Noir

Finishes

Vetri lucidi temperati

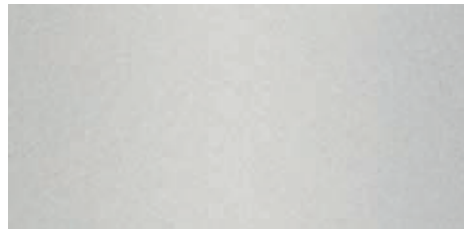
Tempered gloss glass / Glänzende Sicherheitsgläser / Cristales brillantes templados / Verres brillants trempés



VE Verde retroverniciato / Green back-painted / Grünes, an der Rückseite lackiert / Verde retrobarnizado / Vert laqué au dessous



XB Extra white retroverniciato / Extra white back-painted / Extraweißes, an der Rückseite lackiert / Extra white retrobarnizado / Extra blanc laqué au dessous



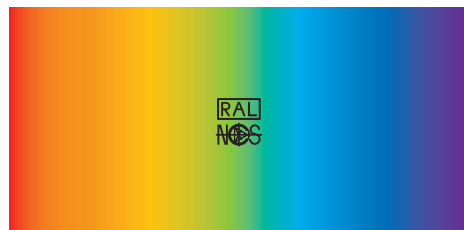
V3 Titanio retroverniciato / Titanium back-painted / Titan, an der Rückseite lackiert / Titanio retrobarnizado / Titane laqué au dessous



V1 Grigio antracite retroverniciato / Anthracite grey back-painted / Anthrazitgraues, an der Rückseite lackiert / Antracita retrobarnizado / Gris anthracite laqué au dessous



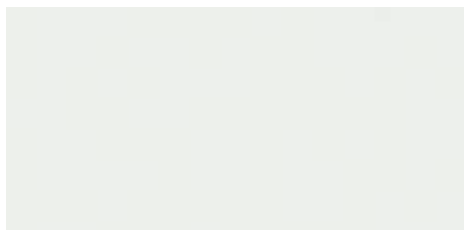
V2 Nero retroverniciato / Black back-painted / Schwarz, an der Rückseite lackiert / Negro retrobarnizado / Noir laqué au dessous



Colori scala RAL/NCS / RAL/NCS range colours / Farben der Skala RAL/NCS / Colores escala RAL/NCS / Coloris palette RAL/NCS

Vetri opachi temperati

Tempered matt glass / Matte Sicherheitsgläser / Cristales mates templados / Verres mats trempés



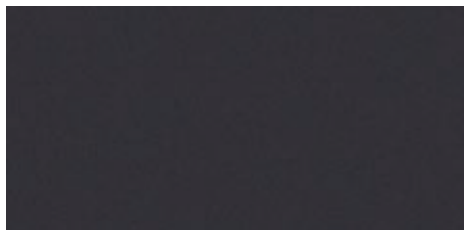
XBM Extra white retroverniciato / Extra white back-painted / Extraweißes, an der Rückseite lackiert / Extra white retrobarnizado / Extra blanc laqué au dessous



V3M Titanio retroverniciato / Titanium back-painted / Titan, an der Rückseite lackiert / Titanio retrobarnizado / Titane laqué au dessous



V1M Grigio antracite retroverniciato / Anthracite grey back-painted / Anthrazitgraues, an der Rückseite lackiert / Antracita retrobarnizado / Gris anthracite laqué au dessous



V2M Nero retroverniciato / Black back-painted / Schwarz, an der Rückseite lackiert / Negro retrobarnizado / Noir laqué au dessous