

Silla tejida "Lapala" / hand-woven chair

C597T

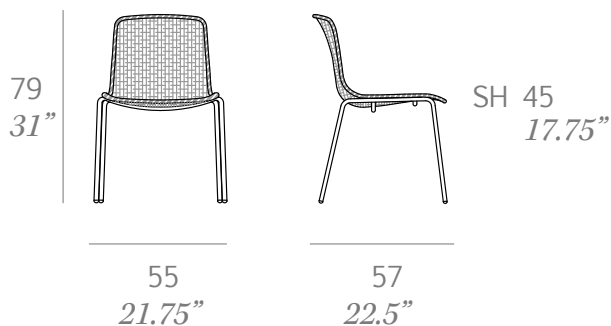
OUT



Silla fabricada en tubo de acero inoxidable. Asiento y respaldo tejido a mano artesanalmente con cuerda de poliéster de alta resistencia de 7 mm de sección. Patas fabricadas en tubo de acero inoxidable lacado. Silla apilable.

Chair made of stainless steel tube. Seat and backrest hand-woven finish using rope made of high resistance polyester 7 mm/0.27" thick. Legs made of lacquered stainless steel tube. Stackable chair.

Medidas / Dimensions	55 x 57 x 79 cm 21.75" x 22.5" x 31"
Peso / Weight	20 kg / 44 lb
Volumen / Volume	0,37 m ³ / 13 ft ³



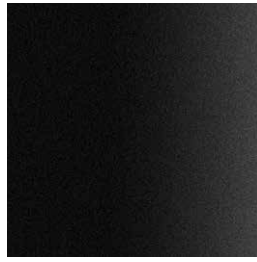
Estructura / frame



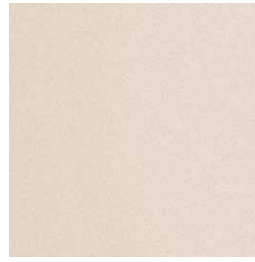
100 white



107 brown



101 black fine textured



109 champagne fine textured

Cuerda de poliéster / polyester rope



400 white



407 taupe



401 black