

## Banqueta tejida "Lapala" / hand-woven footstool

C590T

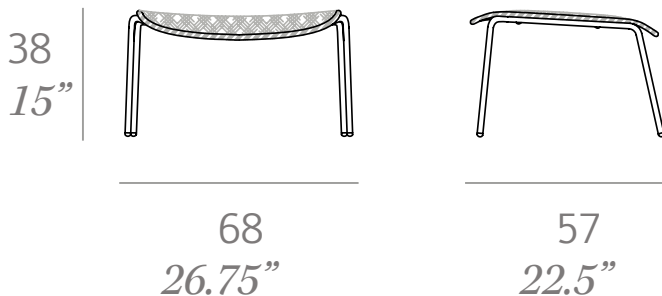
*OUT*



Banqueta fabricada en tubo de acero inoxidable. Asiento tejido a mano artesanalmente con cuerda de poliéster de alta resistencia de 7 mm de sección. Patas fabricadas en tubo de acero inoxidable lacado. Apilable.

Footstool made of stainless steel tube. Seat hand-woven finish using rope made of high resistance polyester 7 mm thick. Legs made of lacquered stainless steel tube. Stackable.

Medidas / Dimensions	68 x 57 x 38 cm 26.75" x 22.5" x 15"
Peso / Weight	17 kg / 38 lb
Volumen / Volume	0,20 m <sup>3</sup> / 7 ft <sup>3</sup>



## Estructura / frame

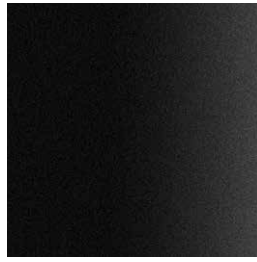
---



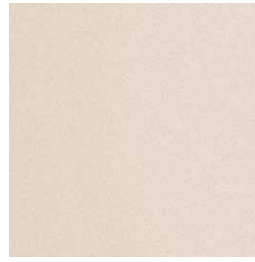
100 white



107 brown



101 black fine textured



109 champagne fine textured

## Cuerda de poliéster / polyester rope

---



400 white



407 taupe



401 black