

## Pie de mesa con tapa redonda o elíptica “Bistro”

C904

Dining table stand with round or elliptical top

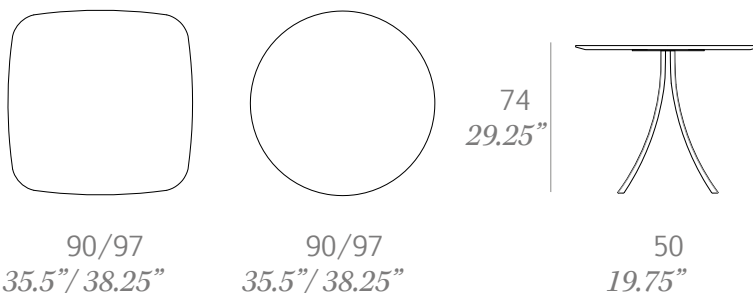
*OUT*



Estructura fabricada en tubo oval de acero inoxidable, acabado en pintura de polvo de poliéster. Dos opciones de sobre: tablero HPL Trespa® de 13 mm y sobre porcelánico Kerlite®. Se sirven desmontadas

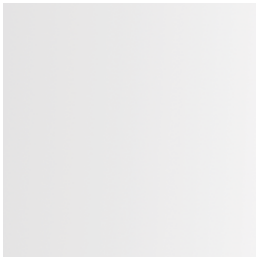
Structure made of oval stainless steel tube, finished with polyester powder. Two table top options: Trespa® HPL 13 mm/0.51" thick and Kerlite® porcelain. Delivered unassembled.

Medidas / Dimensions	50 x 50 x 74 cm 19.75" x 19.75" x 29.25"
Peso / Weight	
HPL Trespa® 90 cm	28 kg / 61.7 lb
HPL Trespa® 97 cm	30 kg / 66.1 lb
Kerlite® 90 cm	32 kg / 70.6 lb
Kerlite® 97 cm	35 kg / 77.2 lb
Volumen / Volume	0,43 m <sup>3</sup> / 15.2 ft <sup>3</sup>



## Estructura / frame

---



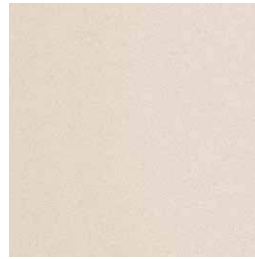
100 white



101 black



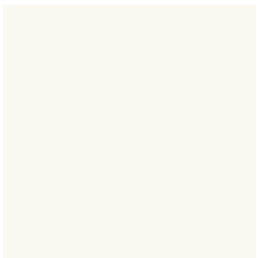
107 brown



109 champagne fine textured

## HPL Trespa®

---



300 white



302 grey



303 anthracite



308 natural greige

## Kerlite®

---



K11 champagne



K12 argerot