

## Pie de mesa con tapa redonda "Bistro"

C903

Dining table stand with round top

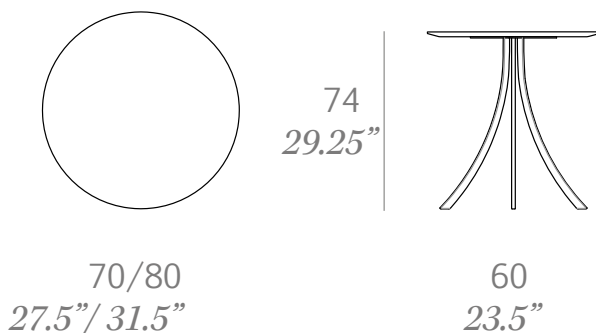
*OUT*



Estructura fabricada en tubo oval de acero inoxidable, acabado en pintura de polvo de poliéster. Dos opciones de sobre: tablero HPL Trespa® de 13 mm y sobre porcelánico Kerlite®. Se sirven desmontadas

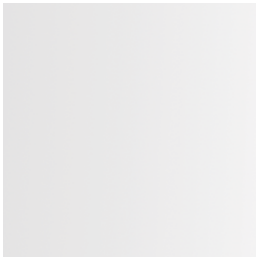
Structure made of oval stainless steel tube, finished with polyester powder. Two table top options: Trespa® HPL 13 mm/0.51" thick and Kerlite® porcelain. Delivered unassembled.

|                      |  |
|----------------------|--|
| Medidas / Dimensions | 60 x 60 x 74 cm<br>23.5" x 23.5" x 29.25"  |
| Peso / Weight        |  |
| HPL Trespa® 70 cm    | 20 kg / 44.1 lb                            |
| HPL Trespa® 80 cm    | 22 kg / 48.5 lb                            |
| Kerlite® 70 cm       | 27 kg / 59.5 lb                            |
| Kerlite® 80 cm       | 30 kg / 66.1 lb                            |
| Volumen / Volume     | 0,41 m <sup>3</sup> / 14.5 ft <sup>3</sup> |



## Estructura / frame

---



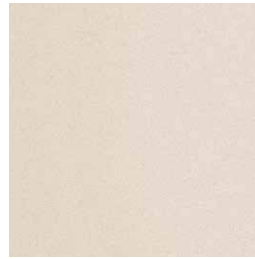
100 white



101 black



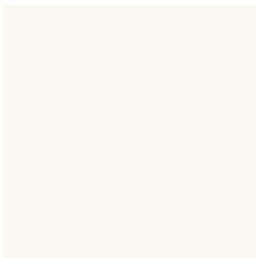
107 brown



109 champagne fine textured

## HPL Trespa®

---



300 white



302 grey



303 anthracite



308 natural greige

## Kerlite®

---



K11 champagne



K12 argerot