

Taburete tejido "Lapala" / hand-woven barstool

C599T

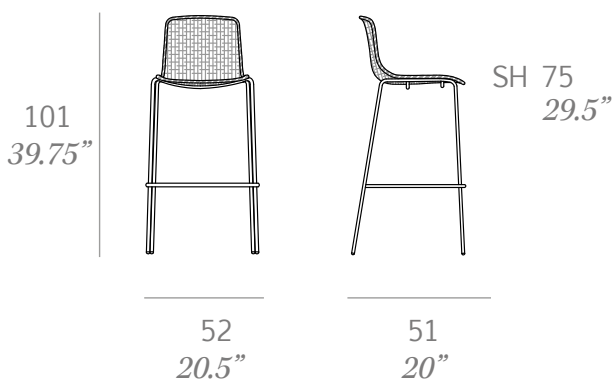
OUT



Taburete fabricado en tubo de acero inoxidable. Asiento y respaldo tejido a mano artesanalmente con cuerda de poliéster de alta resistencia de 7 mm de sección. Patas fabricadas en tubo de acero inoxidable lacado. Taburete apilable.

Barstool made of stainless steel tube. Seat and backrest hand-woven finish using rope made of high resistance polyester 7 mm/0.27" thick. Legs made of lacquered stainless steel tube. Stackable barstool.

Medidas / Dimensions	52 x 51 x 101 cm 20.5" x 20" x 39.75"
Peso / Weight	18 kg / 40 lb
Volumen / Volume	0,40 m ³ / 14 ft ³



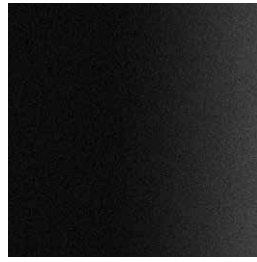
Estructura / frame



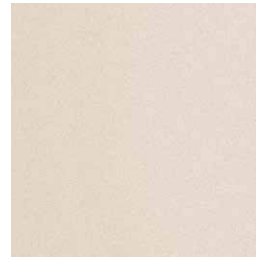
100 white



107 brown



101 black fine textured



109 champagne fine textured

Cuerda de poliéster / polyester rope



400 white



407 taupe



401 black