

Sillón comedor tejido "Lapala" / hand-woven dining armchair

C596T

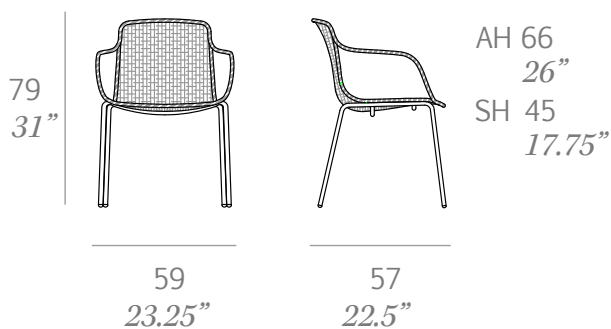
OUT



Sillón comedor fabricado en tubo de acero inoxidable. Asiento y respaldo tejido a mano artesanalmente con cuerda de poliéster de alta resistencia de 7 mm de sección. Patas fabricadas en tubo de acero inoxidable lacado. Sillón comedor apilable.

Dining armchair made of stainless steel tube. Seat and backrest hand-woven finish using rope made of high resistance polyester 7 mm/0.27" thick. Legs made of lacquered stainless steel tube. Stackable dining armchair.

Medidas / Dimensions	59 x 57 x 79 cm 23.25" x 22.5" x 31"
Peso / Weight	22 kg / 49 lb
Volumen / Volume	0,40 m ³ / 14 ft ³



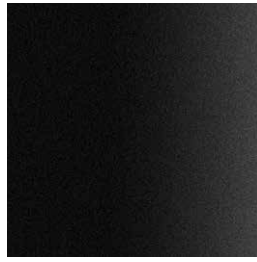
Estructura / frame



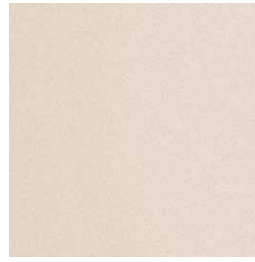
100 white



107 brown



101 black fine textured



109 champagne fine textured

Cuerda de poliéster / polyester rope



400 white



407 taupe



401 black