

de Sede Leder Living

Typ: Leicht pigmentiert, mit leicht geprägtem Narbenbild

Stärke: 1.5 to 1.7 mm

Charakteristik: Elegant in der Anmutung, besonders strapazierfähig, dank pflegeleichtem Finish wenig empfindlich gegen Feuchtigkeit, Flecken und Lichteinflüsse. Living bringt praktische Überlegungen mit hoher Ästhetik zusammen.

Type: Lightly pigmented with lightly embossed grain pattern

Thickness: 1.5 to 1.7 mm

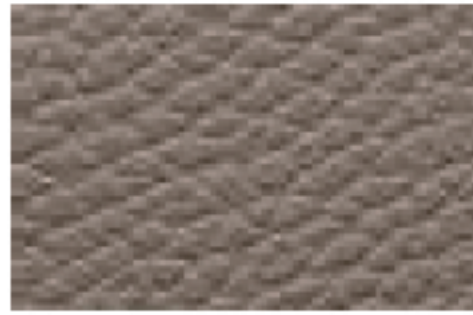
Characteristics: Elegant in appearance, particularly durable, less sensitive to humidity, spots and light exposure thanks to an easy-care finish. Living unites practical considerations with a high aesthetic.



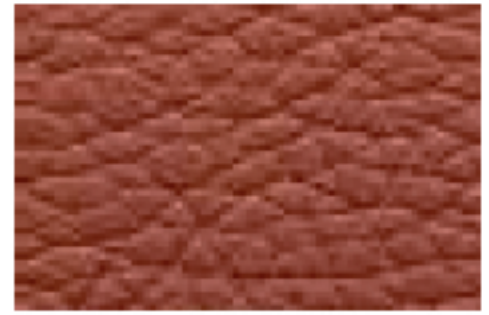
2812 Offwhite
Warmweiß / offwhite



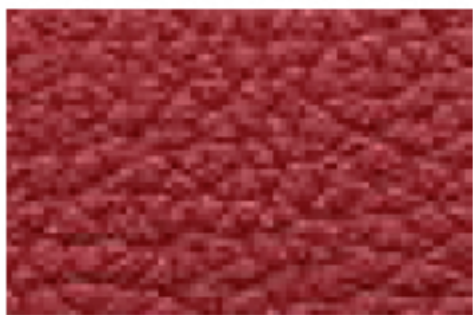
2807 Ecrú
Natur / nature



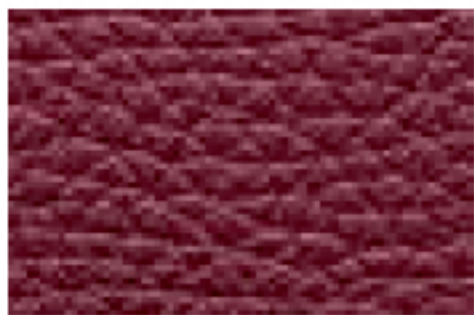
2817 Taupe
Taupe / taupe



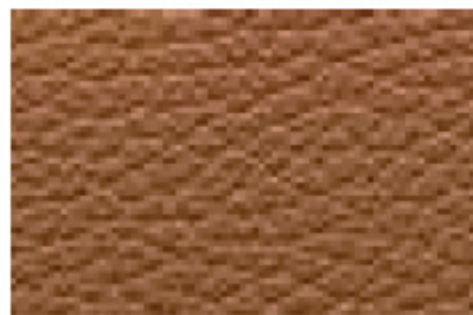
2821 Sepia
Sepia / sepia



2862 Scarlet
Scarletrot / Scarlet red



2865 Cherry
Kirschrot / cherry red



2866 Teak
Teak / teak



2877 Cigarro
Tabak / tobacco



2802 Umbra
Dunkelgrau / dark grey



2830 Cafe
Kaffeebraun / coffee



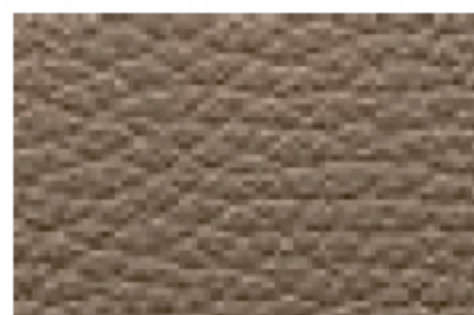
2841 Paris
Dunkelblau / dark blue



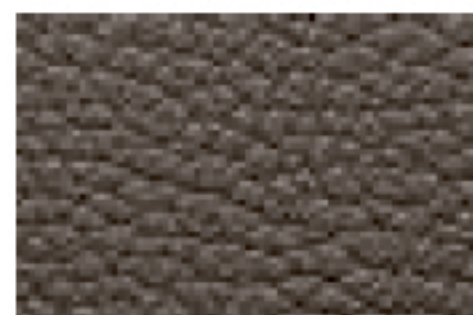
2854 Whisky
Whisky / whiskey



2880 Sand
Sand / sand



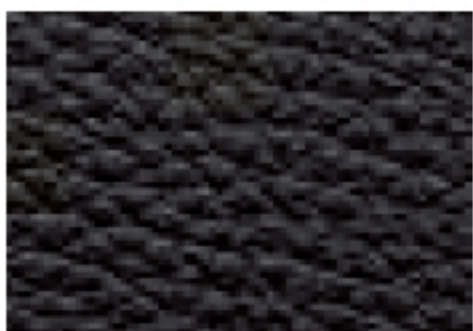
28116 Cashmere
Kaschmir / cashmere



28118 Truffe
Trüffel / truffle



28176 Nougat
Nugat / nougat



2811 Black
Schwarz / black