

# Aston Office / 4 Ways

## Design by Jean-Marie Massaud, 2006

Art. 1925: armchair with four way swivel base

Art. 1926: armchair with four way base with return mechanism

Armchair with four way swivel base in polished aluminium, available also with return mechanism (Art. 1926). The shell support is available with a polished or painted finish. The spring providing the tilt movement is available in chromed or red version. The polyurethane shell is upholstered in leather, faux leather, fabric, or customer's fabric.



### Dimensions\*



\* Files CAD 2D - 3D available for download at [www.arper.com](http://www.arper.com)

### Base finishes



LU1  
Shiny  
aluminum

### Shipment details

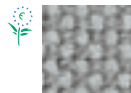
	kg	m <sup>3</sup>	lb	ft <sup>3</sup>
Art. 1925 1 PCS = 1 box	27.50	0.715	60.50	25.25
Art. 1926 1 PCS = 1 box	27.50	0.715	60.50	25.25

### Materials

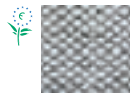
#### Fabric by kvadrat and No Stain



Topas 2  
67 colors



Hallingdal 65  
58 colors



Remix 2  
49 colors



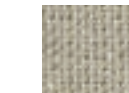
Cava 3  
49 colors



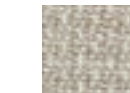
Flora 2  
33 colors



Pro 2  
35 colors



Lazio 2  
28 colors



Clara  
28 colors



Tempo  
22 colors



Divina MD  
27 colors



Scuba  
24 colors



No Stain  
34 colors



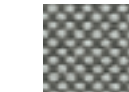
Divina 3  
56 colors



Divina  
Melange 2  
24 colors



Tonus 3  
64 colors



Field  
24 colors



Steelcut  
Trio 2  
49 colors



Sunniva  
12 colors



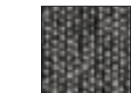
Steelcut 2  
37 colors



Pause 4  
43 colors



Canvas  
28 colors



Savanna  
13 colors

#### Faux leather, Soft leather and chrome free leather by elmo.



PI  
Faux  
leather  
52 colors



PF  
Soft  
leather  
13 colors



ES  
Soft leather  
Elmosoft®  
60 colors

# Aston Office / 4 Ways

## Design by Jean-Marie Massaud, 2006

### Options and accessories



1 2 3 4 5



6 7 8

- |  |                                       |
|--|---------------------------------------|
| 1 Polished aluminium seat support (standard) | 6 Glides for all other types of floor |
| 2 White laquered matt V12 seat support       | 7 Glides for wooden floor             |
| 3 Black laquered matt V39 seat support       | 8 Glides for carpets                  |
| 4 Chromed tilt spring (standard)             |                                       |
| 5 Red painted tilt spring                    |                                       |

arper

### Fire retardant test

#### UK CONTRACT:

BS7176-07 Medium Hazard: Faux leather. Elmosoft. Fabric (Flora 2, Pro 2, Divina 3, Divina Melange 2, Divina MD, Hallingdal 65, Tonus 3, Topas 2).

#### UK DOMESTIC:

BS5852-1:1979 Sch.4-5 Part1: Faux leather. Soft leather. Elmosoft. Fabric (Flora 2, Divina 3, Divina Melange 2, Divina MD, Hallingdal 65, Tonus 3, Topas 2). BS5852-1:1979 Sch. 4 Part1: Fabric (Pro 2).



F +39 0422 791800

T +39 0422 7918

www.arper.com

\* For more information on product's certification and environment documents visit [www.arper.com](http://www.arper.com) or contact us at [environment@arper.com](mailto:environment@arper.com)